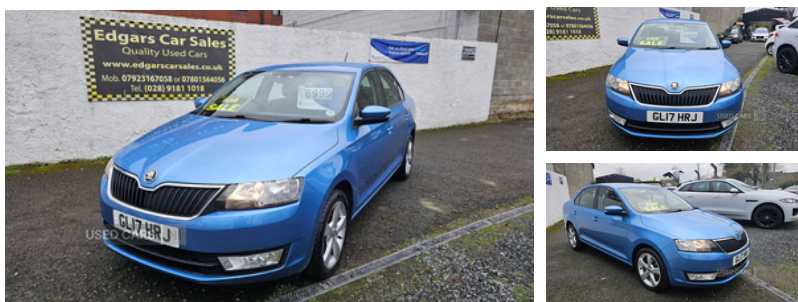


Skoda Rapid 1.2 TSI 110 SE L 5dr | 2017

FINANCE FROM £ 169 WITH ZERO DEPOSIT AND NO FINAL PAYMENT.

£6,999



A superb example of the Skoda Rapid SE L, presented in excellent condition with just **56,000 miles**. This well-maintained model combines refined performance with practicality, comfort, and low running costs-delivering up to **67 MPG**.

Offered with flexible finance from **£169/month**, with **ZERO deposit** and **NO final balloon payment**.

Vehicle Highlights:

- 1.2 TSI 110PS Petrol Engine - Smooth & Responsive
- 6-Speed Manual Transmission
- Comes with a Full MOT
- HPI Clear

Premium Features:

- Touchscreen Infotainment System
- DAB Digital Radio & Bluetooth Connectivity
- Rear Parking Sensors
- Cruise Control
- Dual-Zone Climate Control
- LED Daytime Running Lights
- 16" Alloy Wheels
- Electric Windows (Front & Rear)
- ISOFIX Child Seat Mountings
- Exceptionally Spacious Interior & Boot

Finished in a stylish **Blue Metallic**, this Rapid offers premium comfort, modern tech, and impressive efficiency, making it an outstanding choice for families and professionals alike.

Part Exchange Welcome | Nationwide Delivery Available | Test Drives by Appointment

Vehicle Features

3 spoke multifunction steering wheel with audio and phone controls, 3x3 point rear seatbelts, 6 speakers, 12V socket in centre console, 60/40 split fold rear seat back, ABS, Aero wiper + intermittent function, Alarm/immobiliser, Bluetooth system, Body colour bumpers, Body colour door handles, Body colour door mirrors, Centre console with storage/cupholders, Chrome interior trim, Climate control air conditioning, Cloth upholstery, Curtain

Miles:	56597
Fuel Type:	Petrol
Transmission:	Manual
Colour:	Blue
Engine Size:	1197
CO2 Emission:	110
Tax Band:	Petrol/Diesel (£195 p/a)
Body Style:	Hatchback
Insurance group:	17E
Reg:	GL17HRJ

Technical Specs

DIMENSIONS

Length:	4483mm
Width:	1706mm
Height:	1461mm
Seats:	5
Luggage Capacity (Seats Up):	550L
Gross Weight:	1645KG
Max. Loading Weight:	535KG

PERFORMANCE & ECONOMY

Fuel Consum. (Urban Cold):	45.6MPG
Fuel Consum. (Extra Urban):	67.3MPG
Fuel Consum. (Combined):	57.7MPG
Fuel Tank Capacity:	55L
Number Of Gears:	6 SPEED
Top Speed:	124MPH
Acceleration 0-100 km/h:	9.8s
Engine Power BHP:	108.6BHP

airbags, Driver and passenger airbags, Driver seatbelt warning indicator, Driver seat height adjust, Electrically adjustable and heated door mirrors, Electric front windows, ESP with ASR, Floor mats, Front centre armrest, Front cupholders, Front seatback pocket, Fuel cut off safety device, Glovebox, HBA (Hydraulic Brake Assist), Heated rear window, Height/reach adjust steering wheel, Height adjustable front headrests, Height adjustable headlamps, Height adjustable passenger seat, Height adjustable rear head restraints, Interior light, Isofix child seat preparation, Leather gaiter, Leather gear knob, Leather handbrake lever, Luggage compartment lighting, Multi device interface, Outside temperature gauge, PAS, Passenger airbag deactivate switch, Passenger sunvisor with vanity mirror, Pollen filter, Radiator grille with chrome surround, Rear electric windows, Rear wash/wipe, Remote control central locking, Service indicator, Side airbags, Storage compartment in rear doors, Sunglasses storage, Ticket holder, Tinted glass, Traction control, Trip computer, Two tone horn, Tyre pressure monitor